

# AD17T

ALL TERRAIN PLATFORM

**The Pioneer dumper-mounted all-terrain platform will get to places other platforms simply will not go.**

The Pioneer's impressive 17m working height and 7.90m outreach is achieved from only a 2.4m jacking width. A frame hydraulic outriggers level the Pioneer on sloping or uneven ground.

4x4 drive, low weight (only 3.5 tonnes) and 32 HP engine give unmatched drive performance, up to 22 KPH and 40% gradeability.

- 17m Working Height
- 7.90m Outreach
- 215kg SWL
- 2.4m Jacking Width
- 4x4 Drive
- 40% Gradeability
- 22KPH Drive Speed

**“Pioneer...  
...where you've  
never been  
before!...”**



**NEW  
SERIES**

**AERIAL**

# Pioneer AD17T

The Pioneer is designed to give access to many applications, otherwise difficult or impossible with other platforms. Pioneer's ability to travel at up to 22KPH on the road or plough through uneven, rough site conditions is unmatched.

Once in-situ, the Pioneer can be levelled on sloping or uneven ground quickly and simply using its A Frame outriggers.

An articulated, top-telescopic and final Flick Boom gives the Pioneer 17m working height and up to 7.90m of up and over horizontal outreach. This combined with 90° rotation and 215kg SWL make the Pioneer the preferred choice for many applications including tree surgery, estate management, substation access, off-road construction etc.

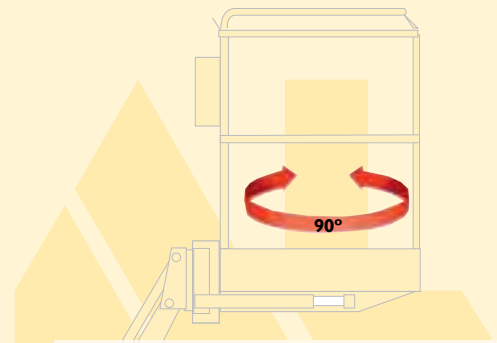
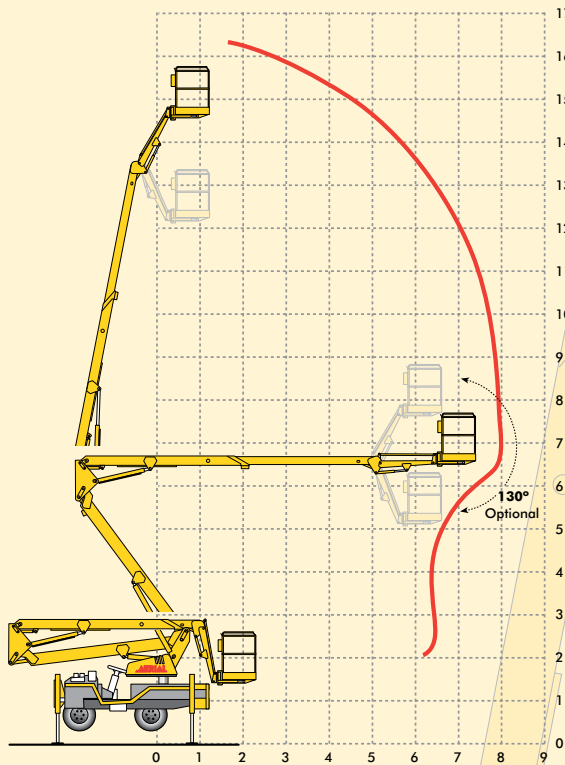
As with all Aerial products, the Pioneer is CE marked and complies fully with all relevant EC standards and machinery directives. Full fail-safe

outrigger interlocks and hydraulic circuit ensure Pioneer's operators are always carried in complete safety.

The Pioneer is engineered and built to last. Robust full steel construction, fully bushed stainless steel pivots, quality components and tough durable powder coat finish provide long term reliability and protection against wear and tear.

Aerial have third party accreditation to ISO 9001 and are an IPAF and CITB approved training company. In the UK, there are now over 80 mobile service engineers working from four hub depots providing after sales technical and service support unmatched in the industry.

The Pioneer, a robust high quality platform, backed by unrivalled sales support, from a long established British manufacturer, a combination that's hard to beat!



## Operating Dimensions

Max. Working Height	16.80m
Max. Platform Height	14.80m
Max. Outreach	7.90m
Capacity (SWL)	215kg
Outrigger Footprint	2.40m x 3.60m
Rotation	90°
Basket Rotation	90°



## Basket Dimensions

Depth	0.80m
Width	1.20m
Guard Rail Height	1.10m
Toe board Height	0.15m



## Closed Dimensions

Overall Height	2.75m
Overall Length	6.10m
Width	1.90m
Weight	3,500kg



## Control Systems

Power Source: Engine PTO  
 Controls: Fully proportional hydraulic controls at basket and ground.



## Chassis/Superstructure

All steel welded superstructure  
 Ausa 300RG dumper chassis. Permanent 4 wheel drive, 4 forward and reverse gears.  
 Standard Engine: Deutz twin cylinder air-cooled 32 HP.  
 Option: Isuzu water-cooled and automatic hydrostatic drive.



## Safety

Full fail-safe hydraulics, load sensing full hydraulic outrigger interlocks c/w LED display. Manual emergency lowering from ground and basket. designed to meet or exceed all British and European safety standards.



This product guide is intended for general information only and is not legally binding, nor does it form part of any contract. All dimensions are approximate. the manufacturer reserves the right to alter or improve specifications without notice.



0800 866 587

contact@universalplatforms.com  
 universalplatforms.com

# Universal