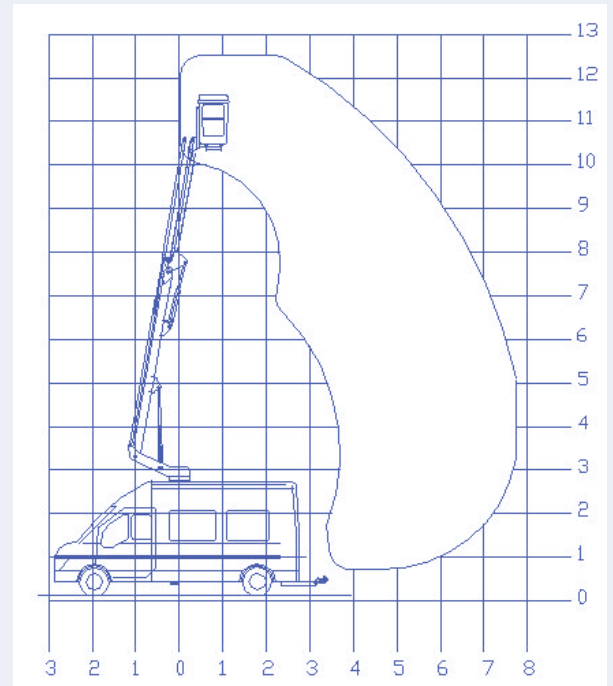




Ascendant 12.5 VM



Special features

Two boom reverse articulated lift mechanism with mechanical stops.

Full pressure proportional hydraulic controls.

Engine stop start at platform controls.

Stabiliser controls in cab with automatic activation of platform control when set.

DC power pack for emergency operation of booms and stabilisers, plus manual rotation and descent.

Jacks/boom and PTO/handbrake interlocks

Warning lights for:

- booms not stowed
- jacks not stowed
- PTO engaged

Vehicle specifications

Maximum working height	12.5m
Maximum platform height	10.5m
Max. working outreach	7.7m
SWL	230kg
Platform dimensions	0.8 x 1.3 x 1.1m
Stabiliser spread	2.6m
Kerb weight (Ford Transit 350 LWB).....	3050kg

Typical chassis

GVW.....	3500kg
Wheelbase	3750mm
Travel length	7.1m
Travel width	2.0m
Travel height	3.45m

