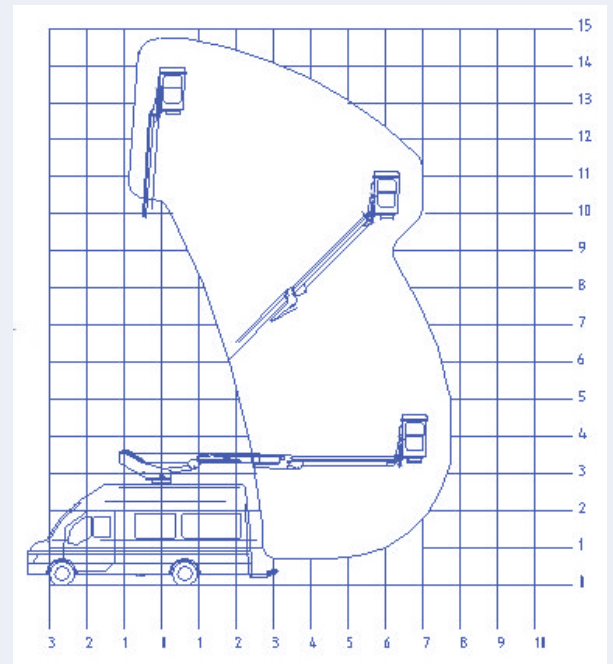




Ascendant 15VM



Special features

- A spare payload capacity of 1000kg.
- Safe working load of 230kg.
- Two section telescopic plus flyboom lift mechanism with zero tailswing.
- Full pressure proportional hydraulic controls.
- Engine stop start at platform controls.
- Stabiliser controls in cab with automatic activation of platform control when set.
- DC power pack for emergency operation of booms and stabilisers, plus manual rotation and descent.
- Jacks/boom and PTO/handbrake interlocks
- Warning lights for:
 - booms not stowed
 - jacks not stowed
 - PTO engaged



Vehicle specifications

| | |
|-------------------------------------|------------------|
| Maximum working height | 14.9m |
| Maximum platform height | 12.9m |
| Max. working outreach | 7.7m |
| SWL | 230kg |
| Flyboom length..... | 2900mm |
| SWL | 90° |
| Platform dimensions | 0.8 x 1.3 x 1.1m |
| Stabiliser spread | 3.2m |
| Kerb weight (IVECO 50C15 3.3m)..... | 4050kg |

Typical chassis

| | |
|---------------------|--------|
| GVW..... | 5200kg |
| Wheelbase | 3300mm |
| Travel length | 7.4m |
| Travel width | 2.4m |
| Travel height | 3.6m |

